



Freez-Fiter

Pilot-Regulator Heater Fights Freeze-ups

- Use to heat gas supply to controllers, pilots and instrument regulators
- Heat source - Bruest flameless catalytic heater
- Fuel gas - natural, L.P. (propane), or butane gas
- Low fuel consumption
- FM models suitable for use in Class 1, Division 2, Group D locations
- CSA models suitable for use in Class 1, Division 1 and 2, Group D locations
- Single coil standard - dual coil model available (Use with 2 regulators)
- Low pressure fuel gas regulator comes with unit (Maximum 50 Psi inlet pressure)
- Preheat fuel gas tube

FREEZ-FILTER SPECIFICATIONS

MODEL NO.	EXCHANGER COIL	HEATER	CASE DIMENSION
1800	3/8" OD - Type 304 Stainless Steel • Operating Pressure • 2500 PSI-Max. Test Pressure - 5000 PSI • Exchanger Coil Pipe Fittings - 1/4" NPT	Bruest-SR-8 Catalytic Heater • Start-up Voltage - 12 Volt or 120 Volt • Stainless Steel Case • 2500 BTU Input • Fuel - Natural Gas at 3 1/2" W.C. • LP Gas at 11" W.C.	Size 12" x 12" x 4" with 1" Fiberglass Insulation • Stainless Steel Case
4000	Same as Above	Bruest-SR-12 Catalytic Heater • Start-up Voltage 12 Volt or 120 Volt • Stainless Steel Case • 5000 BTU Input • Fuel-Natural Gas at 3 1/2" W.C. • LP Gas at 11" W.C.	Size 16" x 16" x 4" with 1" Fiberglass insulation • Stainless Steel Case

ACCESSORY OPTIONS

- High pressure fuel gas regulator - 6000 PSI max. - 10-75 PSI outlet - Fisher 1301F
- Thermostat - 100° - 200°F range (INVENSYS)
- Explosion proof junction box is standard on CSA models and optional on FM models
- 16 foot-12V electrical pigtail with battery clips for a standard or explosion proof junction box
- 25 foot-12V electrical pigtail with battery clips for a standard or explosion proof junction box
- Nupro relief valve (set @ 45 psi) 1/4" npt

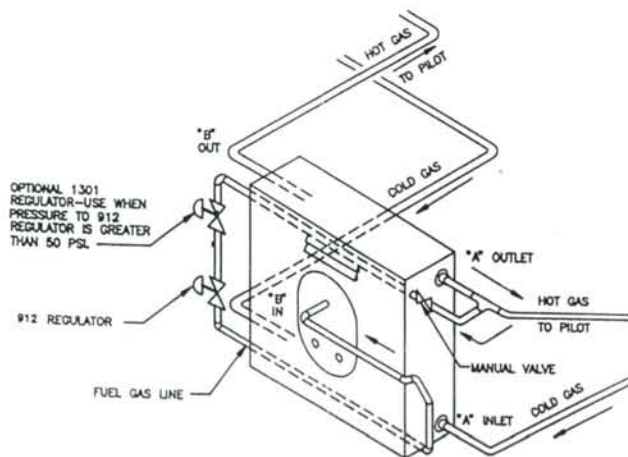


Pilot Regulator Heater FIGHTS FREEZE-UPS

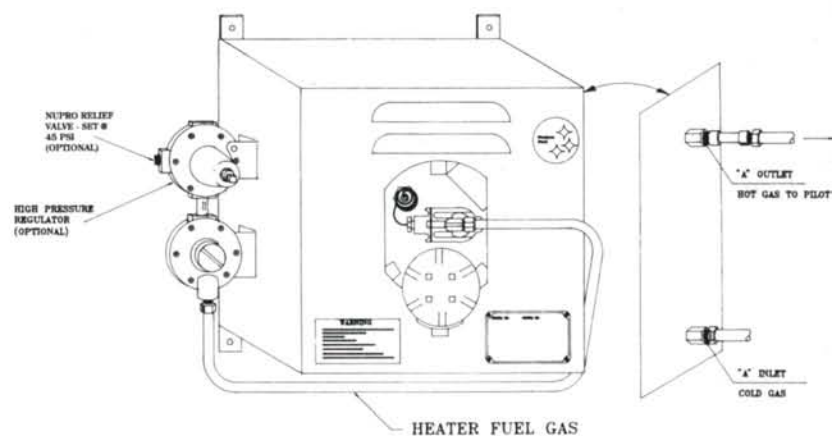
Freez-Fiter Pilot Regulator Heater

APPLICATIONS - MODEL 1800 AND 4000

- Pilot Operated Regulators
Grove Flexflow
American Axial Flow
Fisher 399 and 310
Mooney
Sprague
- Instrument Regulators
- Chromatographs
- Options: preheat fuel tube



SAMPLE DUAL COIL INSTALLATION



SAMPLE INSTALLATION